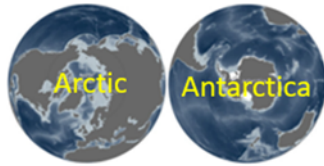


## Y3 Geography: 'Frozen Planet'



### Why are we learning about 'Frozen Planet'?



We are **building on previous learning about** understanding geographical similarities and differences and the location of hot & cold areas in the world.

This **new learning is important because** Antarctica and the Arctic are the least known areas of land on planet Earth. By learning about survival in these places, we will understand how humans and animals can survive in a range of environments. We will also learn about the importance of protecting our planet. Through studying explorer Ernest Shackleton, we will learn about leadership in challenging situations.

This **will help get us ready for future learning about** understanding key aspects of physical and human geography and considering similarities and differences in other geographical areas. It will also help prepare us for leadership roles we may have in the future.

### Important questions to answer:



- How different are Antarctica and The Arctic?
- How have animals adapted to survive at the North and South Poles?
- What happened on Shackleton's attempt to reach the South Pole?
- How did Ernest Shackleton show excellent leadership skills?
- Why should we be concerned about the melting of the Polar ice caps?

### Things we need to know:



- To know where the North and South Poles, Arctic and Antarctic Circles, Northern and Southern Hemispheres are located
- To know which animals live in the polar regions and how they are adapted to do so
- To know key facts surrounding Shackleton's Antarctic expedition
- To know that Shackleton had empathy and emotional intelligence, and valued the importance of team morale
- To know the impact of the ice melting on the temperature of our planet and to weather conditions in the future

### Skills we need to learn:



- I can describe and understand key aspects of physical geography
- I can explain the anatomical and behavioural adaptations of polar animals
- I can recount Shackleton's attempts to reach South Pole
- I can analyse the leadership skills that Shackleton showed
- I can investigate the potential impact of the melting of the Polar ice caps

### Subject Specific Vocabulary:



Antarctica	continent	ice floe
Arctic	adaptation	glacier
South Pole	survival	atlas
North Pole	Ernest Shackleton	environments
hemisphere	tundra	expedition

## Experiences we will have:



- Investigations with melting ice
- Team activities to develop our own team work skills